



develop

PSU test report

Bernhard Woerndl-Aichriedler
bwa@xdevelop.at

1 Contents

- General information
- Point of operation
- Standby power consumption
- Load testing
- Turn on voltage
- Conducted EMI
- Overload testing

2 General information

Testing the following device

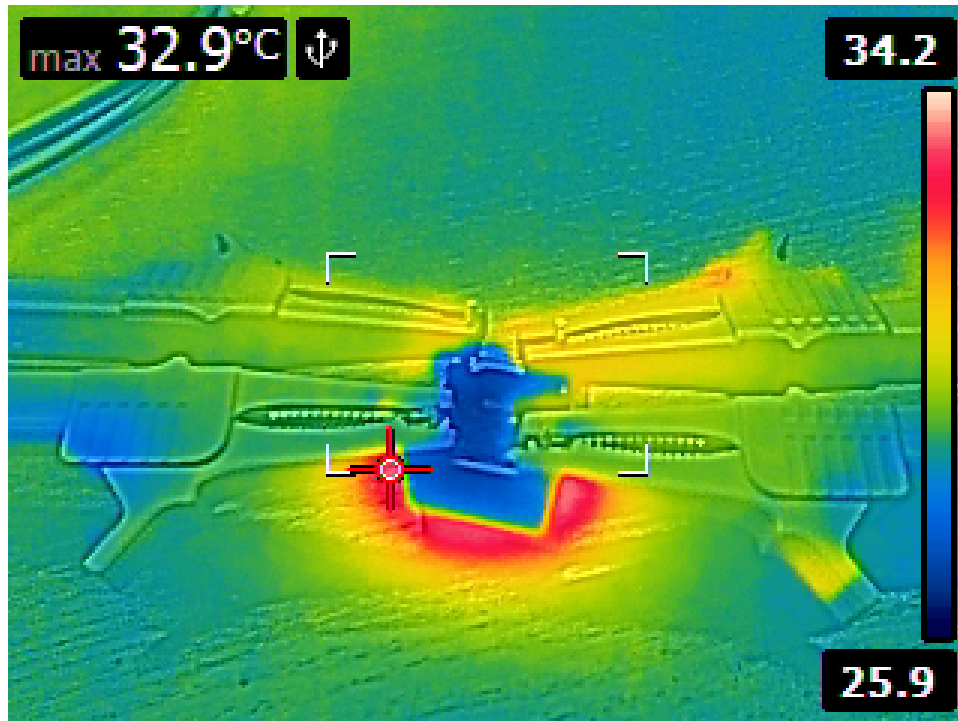
Manufacturer: Vigortronix
Device name: VTX-214-001-112
Serial number: 1
Nominal voltage: 12.000V
Nominal current: 0.085A
Tester: Bernhard Woerndl-Aichriedler <bwa@xdevelop.at>
Start time: 14-Jul-2016 01:06:49

3 Point of operation

The test has been conducted with the following conditions

Voltage/Frequency: 210V-50Hz

Ambient Temperature: 31.59C





4 Standby power consumption

Voltage: 210.60V

Frequency: 50Hz

Current: 0.004062A

P active: 0.195W

P apparent: 0.855VA

P reactive: 0.833VAR

P factor: 0.228

Output voltage: 12.002V



5 Load testing

Characteristics

Voltage: 210.60V

Frequency: 50Hz

Loads: 0.000A to 0.085A

Minimum output voltage: 12.001V

Maximum output voltage: 12.008V

Regulation error absolute: -0.001V/+0.008V

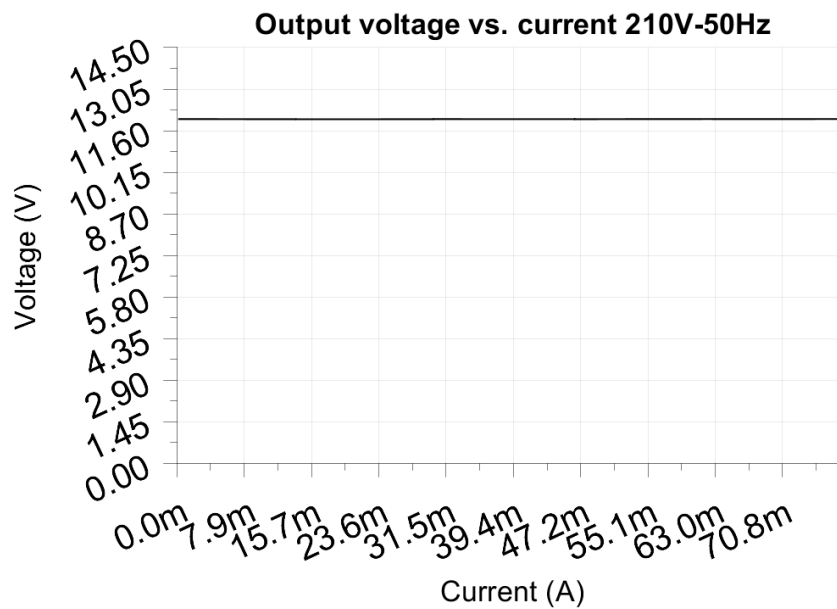
Regulation error relative: -0.0%/+0.1%

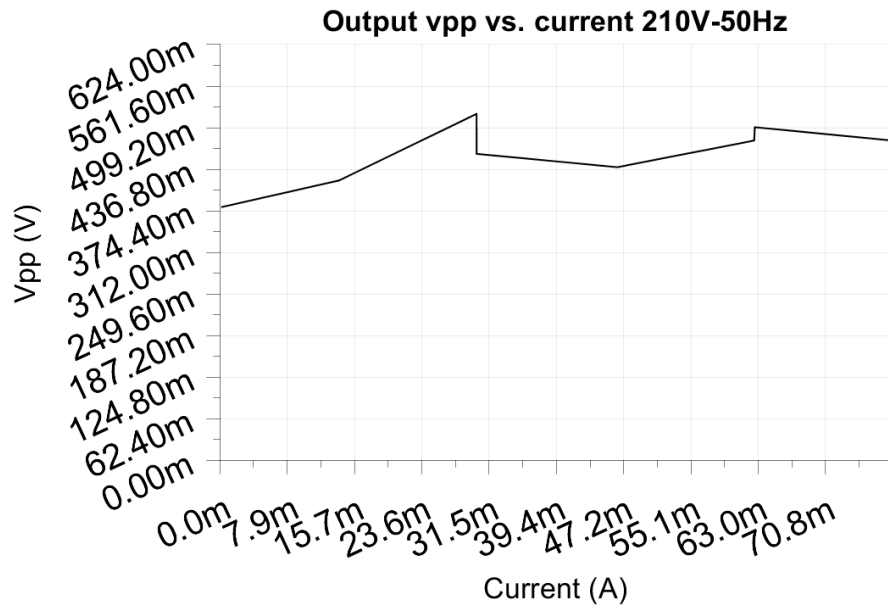
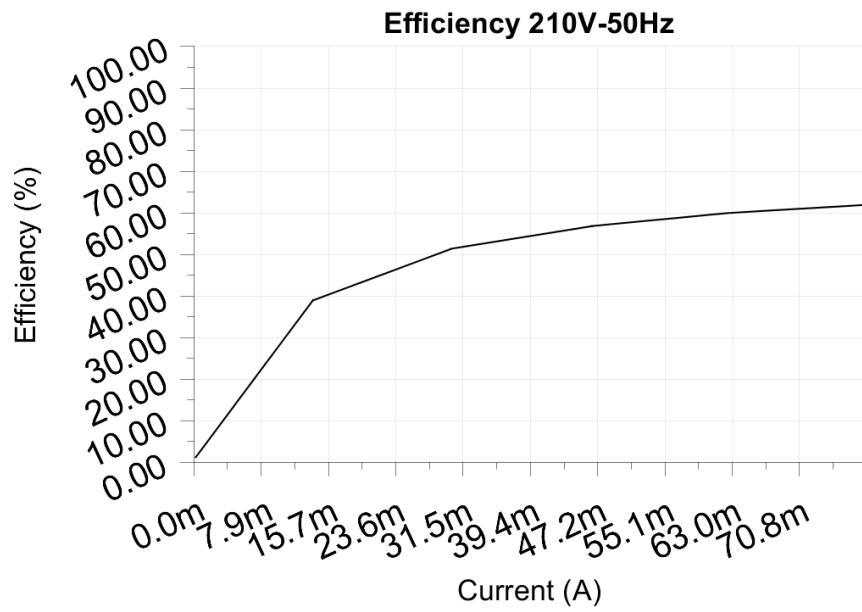
Vpp ripple&noise absolute: 0.520V

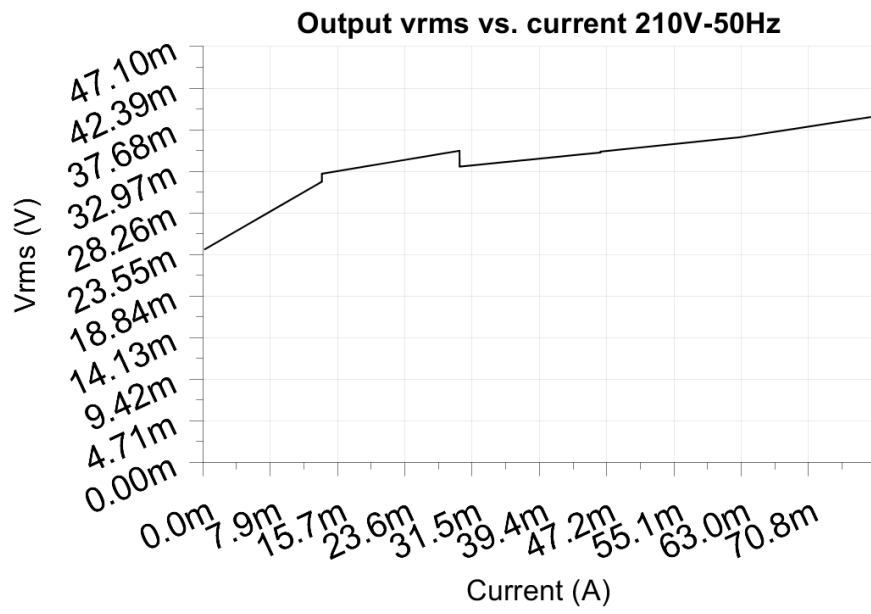
Vpp ripple&noise relative: 4.3%

RMS ripple&noise absolute: 0.039V

RMS ripple&noise relative: 0.3%







6 Turn on voltage

Testing when the PSU enables it's output

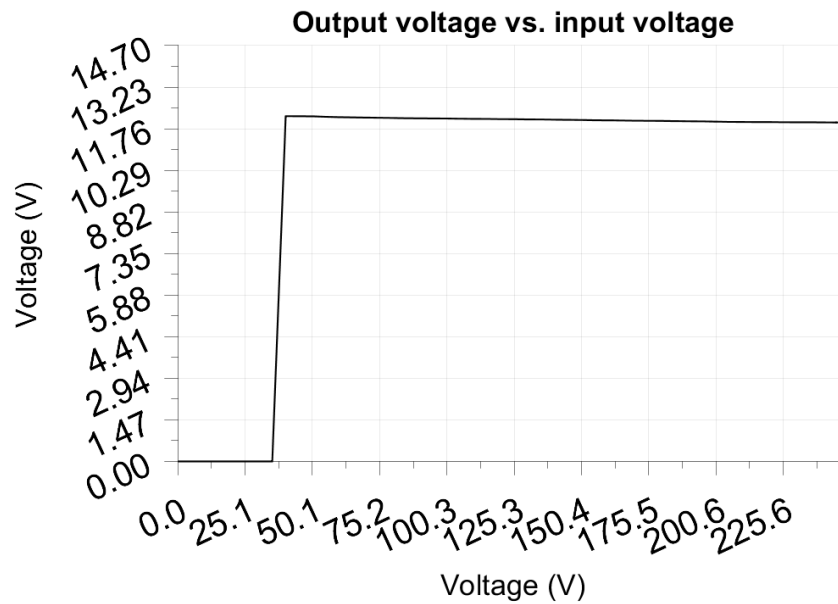
Test load: 0.009A

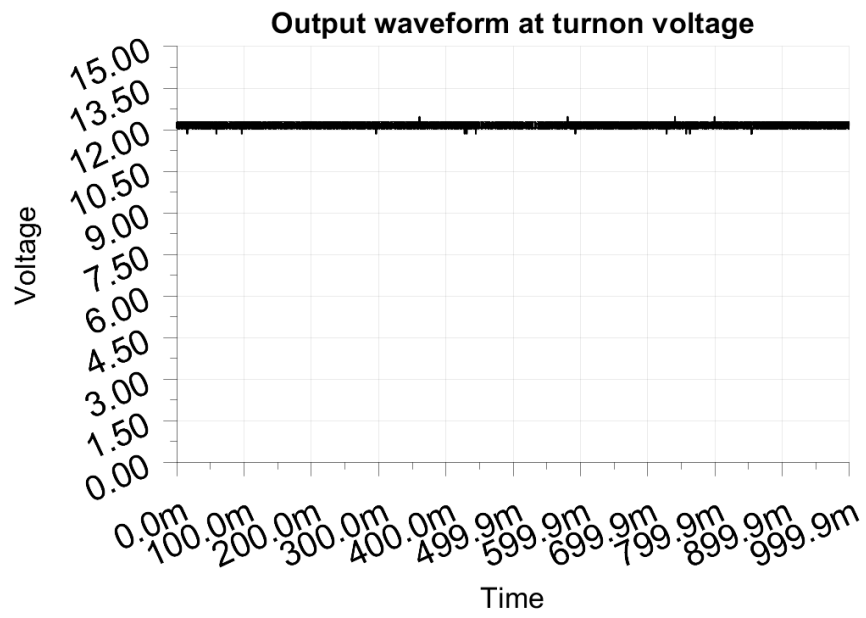
Test Frequency: 50Hz

Threshold: 9.000V

Turn-on voltage: 40.00V

Output voltage: 12.204V





7 Conducted EMI

No EMI test results

8 Overload testing

No overload test results